



Children's Board  
HILLSBOROUGH COUNTY

[www.ChildrensBoard.org](http://www.ChildrensBoard.org)

# 2023 FAMILY GUIDE

for Services in Hillsborough County  
funded by your Children's Board



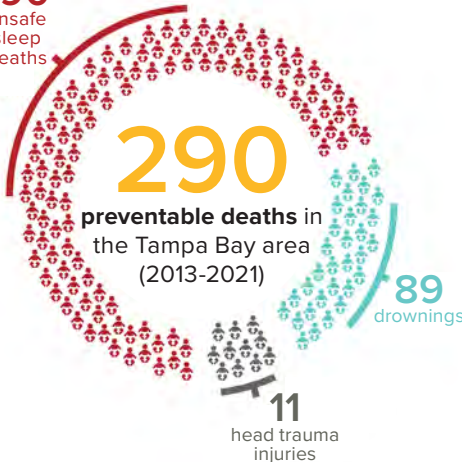
1002 East Palm Avenue • Tampa, FL 33605 • (813) 229-2884

The Children's Board invests in the health and well-being of all children and families in Hillsborough County. For parents and caregivers, children are the most precious gifts, and it's our responsibility to keep them safe. The Prevent Needless Deaths awareness campaign educates caregivers about 100% preventable child deaths related to drowning, unsafe infant sleep, and head trauma.

# Things that **kill kids** should come with warning signs



**190**  
unsafe  
sleep  
deaths



**More infants  
die in adult  
beds than  
anywhere else.**

**Drowning kills  
more kids ages  
1-4 than any  
other cause.**

**Shaking infants,  
even once, can  
kill or injure  
them for life.**

**Learn to prevent  
an accidental death:**

[PreventNeedlessDeaths.com](http://PreventNeedlessDeaths.com)



## BOARD MEMBERS

**Andrew J. Mayts Jr.**  
Gubernatorial Appointee  
*Chair*

**Robin Wright DeLaVergne**  
Gubernatorial Appointee  
*Vice Chair*

**Beth Pasek**  
Community Development Administrator Suncoast Region  
Department of Children and Families  
*Secretary/Treasurer*

**Addison Davis**  
Superintendent Hillsborough County Public Schools

**Megan Proulx Dempsey**  
Gubernatorial Appointee

**The Honorable Katherine Essrig**  
Circuit Judge 13th Judicial Court

**Lynn Gray**  
School Board Member  
Hillsborough County Public Schools

**Chris Letsos**  
Family Well-Being Director  
Department of Children and Families

**Gwen Myers**  
District 3 Hillsborough County Commission

**Edwin Narain**  
Gubernatorial Appointee

**Sarah Naumowich**  
Gubernatorial Appointee

---

**Kelley Parris**  
Executive Director



# TABLE OF CONTENTS

<b>About the Children’s Board of Hillsborough County</b>	
Mission.....	2
Vision.....	2
Conference Center.....	2
Our Budget.....	3
<b>Children’s Board Family Resource Centers</b>	
Children’s Board Family Resource Centers.....	4
<b>Achieve Plant City</b>	
Literacy Is Fun Together.....	6
<b>Bay Area Legal Services</b>	
Lawyers Helping Kids.....	7
<b>Big Brothers Big Sisters of Tampa Bay</b>	
1-to-1 Mentoring (Elementary).....	8
1-to-1 Mentoring (Middle).....	9
<b>Boys &amp; Girls Clubs of Tampa Bay</b>	
After-Zone Elementary School Initiative.....	10
After-Zone Middle School Initiative.....	11
Brandon Art Masters! (BAM!).....	12
<b>Champions for Children</b>	
Baby Bungalow.....	13
Family Focus.....	14
Layla’s House.....	15
Parents as Teachers (PAT).....	16
<b>Children’s Home Network</b>	
Kinship Hillsborough.....	17
Reaching and Inspiring Students Everywhere (RAISE).....	18
Supporting and Empowering Educational and Developmental Services (SEEDS).....	19
<b>Dawning Family Services</b>	
A Path to Prevention.....	20
Housing for Success.....	21
<b>Early Childhood Council of Hillsborough County</b>	
Community Developmental Screening.....	22
Inclusion Support Services.....	23
<b>Early Learning Coalition of Hillsborough County</b>	
School Readiness Funding.....	24

# TABLE OF CONTENTS

<b>Easterseals Florida, Inc.</b>	
Early Learning and Intervention Program .....	25
<b>Family Enrichment Center, The</b>	
Kinship Care .....	26
<b>Family Healthcare Foundation, The</b>	
Connecting Kids to Care .....	27
<b>Girl Scouts of West Central Florida</b>	
Girl Scout Troop Program .....	28
<b>Glazer Children’s Museum</b>	
Children’s Board Free Tuesday .....	29
Learn & Play Tampa Bay .....	30
Pop Up Play in Plant City .....	31
<b>Gulf Coast Jewish Family and Community Services</b>	
Good Afternoon Friends and Amigos .....	32
Teen Parent Engagement Program .....	33
<b>Healthy Start Coalition of Hillsborough County</b>	
Healthy Families Hillsborough .....	34
HealthySteps Hillsborough .....	35
Safe Baby Plus .....	36
<b>Hillsborough Community College Foundation</b>	
Quality Early Education System .....	37
<b>Hillsborough Education Foundation, Inc.</b>	
Tech Connect .....	38
<b>Hispanic Services Council</b>	
La Red de Padres Activos/Network of Active Parents .....	39
<b>Housing Authority of the City of Tampa</b>	
Building Family Financial Skills .....	40
Village Link Up .....	41
<b>Just Initiative</b>	
Woven Empowerment – WE Program .....	42
<b>Metropolitan Ministries</b>	
C.R.E.A.T.E. School Age Program .....	43
First Hug .....	44
<b>One More Child</b>	
One More Child Family Support .....	45



# TABLE OF CONTENTS

<b>Parents and Children Advance Together (PCAT) Literacy Ministries</b>	
South County Literacy Initiative. . . . .	46
Sulphur Springs Literacy Initiative. . . . .	47
<b>Positive Spin</b>	
Empowering a Community with Hope (E.A.C.H. One) . . . . .	48
<b>Preserve Vision Florida</b>	
Children’s Vision Health and Safety Services . . . . .	49
<b>REACHUP, Inc.</b>	
Giving Resources and Opportunities with Trust and Hope (GROWTH) with Doulas and Dads. . . . .	50
<b>Redefiners World Languages</b>	
Multilingual Citizens Program (MCP). . . . .	51
<b>Renaissance Learning</b>	
myON Reader. . . . .	52
<b>Seniors in Service of Tampa Bay</b>	
Readers in Motion. . . . .	53
<b>Spring of Tampa Bay, The</b>	
Family Safety from Domestic Violence . . . . .	54
<b>St. Joseph’s Children’s Hospital</b>	
Mobile Health and Safety Education . . . . .	55
<b>St. Joseph’s Women’s Hospital</b>	
Supporting Motherhood and More. . . . .	56
<b>Success 4 Kids and Families</b>	
Successful Families . . . . .	57
<b>Tampa Metropolitan Area YMCA</b>	
Sulphur Springs YMCA Out of School Time . . . . .	58
<b>Tampa Museum of Art</b>	
Children’s Board Free Family Day. . . . .	59
<b>University Area Community Development Corporation</b>	
Get Moving! Mind, Body & Soul. . . . .	60
<b>University of South Florida Board of Trustees, The</b>	
Helping our Toddlers, Developing our Children’s Skills (HOTDOCS) & Developing Our Children’s Skills K-5 (DOCS K-5) . . . . .	61
Hillsborough HIPPIY Parent Involvement Project. . . . .	62
Program-Wide Positive Behavior Support (PWPBS). . . . .	63

## CHILDREN'S BOARD OF HILLSBOROUGH COUNTY FOCUS AREAS

The Children's Board of Hillsborough County has been investing in children and families for 35 years. Created by referendum in 1988, the Children's Board funds programs and services at the community level to support children and families. Children's Board investments ensure:

### **Children are Developmentally on Track:**

Early Identification of developmental needs for children birth to age five is essential for optimizing a child's learning potential and allows caregivers to learn more about their child's development.

### **Children are Healthy and Safe:**

Early preventative health and education; preparing a family to develop nurturing and healthy habits which are enhanced by coordination with community partners including healthcare systems and primary care providers.

### **Children are Ready to Learn and Succeed:**

School readiness and academic support for children is designed in a way that fosters academic readiness by age eight. Quality early learning promotes early caregiver involvement and professional development for early care educators. Activities may support character development, provide positive role modeling, and motivate students to learn in safe environments.

### **Family Support:**

Support for the whole family by developing informal supports, stability and overall well-being. These relationships establish the foundation for secure attachments and future physical, cognitive and social-emotional health.

## GOVERNING BOARD

The Children's Board is governed by ten Board Members from the local community. Five are "ex-officio", meaning they serve by virtue of the office they hold. The remaining five members of the Board are Hillsborough County citizens appointed by the Governor of Florida. The Governing Board hires the Executive Director, who is responsible for the leadership and management of the agency.

## MISSION

The Children's Board of Hillsborough County invests in partnerships and quality programs to support the success of all children in Hillsborough County.

## VISION

Hillsborough County will be recognized as one of the top places in the nation to raise children.

## CONFERENCE CENTER

Our administrative building on Palm Avenue also serves as a conference center available at no cost to neighborhood, community, and civic organizations. Free parking, easy access to public transportation, and a central location make it a perfect space for community events. For more information about using our conference center, call (813) 229-2884 or email [reservations@childrensboard.org](mailto:reservations@childrensboard.org).



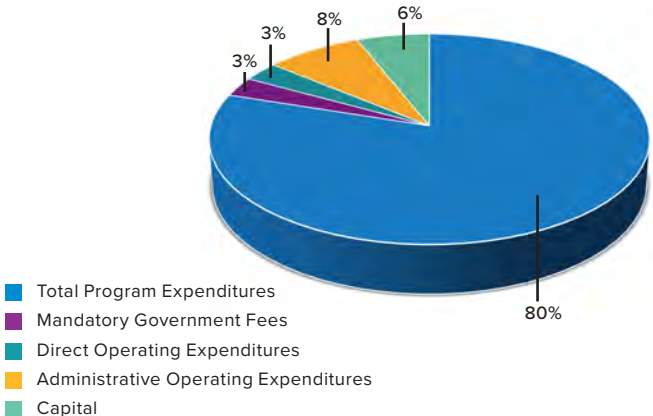
## OUR BUDGET

The Children’s Board of Hillsborough County oversees a budget of \$66.5 million. The chart below represents total revenue and expenditures for Fiscal Year 2023.

### Where the Money Comes From

#### Revenue Sources

<b>Ad-Valorem Taxes</b> .....	<b>61,929,405</b>
<b>Investment Income</b> .....	<b>892,000</b>
<b>Administrative Services Organization (ASO)</b> .....	<b>400,000</b>
<b>Other Community Partner Funding</b> .....	<b>410,000</b>
<b>Miscellaneous Income</b> .....	<b>11,000</b>
<b>Total Revenue</b> .....	<b>63,642,405</b>
<b>Fund Balance</b> .....	<b>2,867,909</b>
<b>Total Budget</b> .....	<b>66,510,314</b>



# CHILDREN'S BOARD FAMILY RESOURCE CENTERS

## *Children's Board Family Resource Centers*

### **Program Description**

The Children's Board Family Resource Centers provide opportunities for parents or caregivers and their children to participate in parent / child developmental playgroups, developmental screenings, and health and safety education. In addition, counseling, pediatric well-child visits, immunizations and hearing or vision screening are provided for qualifying families. The centers have relationships with community partners and volunteers to focus on supporting families with children from birth to eighteen years old. The centers are designed to support families and communities become happier, healthier, and stronger.

### **Locations:**

#### **Brandon**

1271 Kingsway Road  
Brandon, FL - 33510  
(813) 740-4634

#### **Plant City**

301 North Palmer Street  
Plant City, FL - 33563  
(813) 752-8700

#### **Central Tampa**

1002 East Palm Avenue  
Tampa, FL - 33605  
(813) 204-1741

#### **North Tampa**

116 West Fletcher Avenue  
Tampa, FL - 33612  
(813) 558-1877

#### **Doretha Wynn Edgecomb Children's Board Family Resource Center in Temple Terrace**

5892 East Fowler Avenue  
Temple Terrace, FL - 33617  
(813) 435-3032

#### **South County**

3030 East College Avenue  
Ruskin, FL - 33570  
(813) 641-5600

#### **Town 'N Country**

7520 West Waters Avenue, Suite #8  
Tampa, FL - 33615  
(813) 356-1703

**Target Population Served:**

Families with children birth to 18

**Service Area/Geographic Focus:**

Hillsborough County

**Bilingual Services:** Yes - Spanish

**Funding Amount:** \$3,066,243

**Contact Information:**

**Address:** Lutheran Services Florida  
3627 West Waters Avenue  
Tampa, FL 33614

**Phone:** (813) 704-1741

**Website:** [www.familysupporthc.org](http://www.familysupporthc.org)

**Social Media:** Facebook: [Children's Board Family Resource Centers](#)

**Subcontracts:** None

## *Literacy Is Fun Together*

### **Program Description**

The Literacy Is Fun Together (LIFT) program supports family literacy. Parents are engaged in educational activities with their children. The program offers early childhood education classes, developmental screenings, literacy skill assessments, and reading workshops.

### **Target Population Served**

Children eighteen months through 5th grade and their parents/ caregivers

### **Service Area/Geographic Focus:**

East Hillsborough County

### **Bilingual Services:** Yes - Spanish

### **Funding Amount:** \$197,966

### **Contact Information:**

**Address:** 202 West Reynolds Street  
Plant City, FL 33563

**Phone:** (813) 752-4010

**Website:** [www.achieveplantcity.org](http://www.achieveplantcity.org)

**Social Media:** Facebook: [Achieve Plant City](#)

**Subcontracts:** None

## *Lawyers Helping Kids*

### **Program Description**

Lawyers Helping Kids supports children and families with services related to housing, public benefits, employment, domestic violence, paternity, custody, child support, guardianship, and adoption. In addition, eligible families can be referred to Wheels of Success to meet their transportation needs.

### **Target Population Served**

Pregnant women and families with children birth through 5th grade

### **Service Area/Geographic Focus:**

Hillsborough County

**Bilingual Services:** Yes - Spanish

**Funding Amount:** \$716,189

### **Contact Information:**

**Address:** 1302 North 19th Street, Suite #400  
Tampa, FL 33605

**Phone:** (813) 232-1343

**Website:** [www.bals.org](http://www.bals.org)

**Social Media:** Facebook: [Bay Area Legal Services](#)

Twitter: [@Bay\\_Area\\_Legal](#)

**Subcontracts:** None

# BIG BROTHERS BIG SISTERS OF TAMPA BAY

## *1-to-1 Mentoring (Elementary)*

### **Program Description**

The 1-to-1 Comprehensive Mentoring Program provides professionally supported mentoring services to children and youth who can benefit from a caring and supportive relationship. The program supports children and families by connecting a “Little” (youth) with a “Big” (mentor) to achieve a safe, long, and strong match. Volunteers, parents, mentors, and the youth themselves must commit to actively participate for a minimum of fifteen months or longer to maximize the outcome.

### **Target Population Served**

Hillsborough County Elementary School students from kindergarten to 5th grade

### **Service Area/Geographic Focus:**

Hillsborough County

**Bilingual Services:** Yes - Spanish

**Funding Amount:** \$272,500

### **Contact Information:**

**Address:** 5555 West Waters Ave, Suite #607  
Tampa, FL 33634

**Phone:** (813) 769-3600

**Website:** [www.bbbstampabay.org](http://www.bbbstampabay.org)

**Social Media:** Facebook: [Big Brothers Big Sisters of Tampa Bay](#)

Twitter: [@bbbs\\_tampabay](#)

Instagram: [@bbbs\\_tampabay](#)

**Subcontracts:** None

# BIG BROTHERS BIG SISTERS OF TAMPA BAY

## *1-to-1 Mentoring (Middle)*

### **Program Description**

The 1-to-1 Comprehensive Mentoring Program provides professionally supported mentoring services to children and youth who can benefit from a caring and supportive relationship. The program supports children and families by connecting a “Little” (youth) with a “Big” (mentor) to achieve a safe, long, and strong match. Volunteers, parents, mentors, and the youth themselves must commit to actively participate for a minimum of fifteen months or longer to maximize the outcome.

### **Target Population Served**

Hillsborough County Middle School students

### **Service Area/Geographic Focus:**

Hillsborough County

**Bilingual Services:** Yes - Spanish

**Funding Amount:** \$272,500

### **Contact Information:**

**Address:** 5555 West Waters Ave, Suite #607  
Tampa, FL 33634

**Phone:** (813) 769-3600

**Website:** [www.bbbstampabay.org](http://www.bbbstampabay.org)

**Social Media:** Facebook: [Big Brothers Big Sisters of Tampa Bay](#)  
Twitter: [@bbbs\\_tampabay](#)  
Instagram: [@bbbs\\_tampabay](#)

**Subcontracts:** None

# BOYS & GIRLS CLUBS OF TAMPA BAY

## *After-Zone Elementary School Initiative*

### **Program Description**

After-Zone Elementary School program provides after school support to students every day school is in session. This includes homework assistance, character development programs, health and wellness activities and academic support. The program runs when school dismisses until 6pm. Summer programs will be offered if the school is open and will run Monday through Thursday, 7:30am to 6:00pm. Included in summer programs are educational and fun field trips, lunch and snack, sports and character programs and continued academic support.

### **Target Population Served**

Children in kindergarten through 5th grade

### **Service Area/Geographic Focus:**

Just Elementary School, DeSoto Elementary School, Excelsior Prep School

**Bilingual Services:** Yes - Spanish

**Funding Amount:** \$535,191

### **Contact Information:**

**Address:** 1307 North MacDill Avenue  
Tampa, FL 33607

**Phone:** (813) 769-7533

**Website:** [www.bgctampa.org](http://www.bgctampa.org)

**Social Media:** Facebook: [Boys and Girls Clubs of Tampa Bay](#)

Twitter: [@bgctampa](#)

Instagram: [@bgctampa](#)

**Subcontracts:** None



# BOYS & GIRLS CLUBS OF TAMPA BAY

## *After-Zone Middle School Initiative*

### **Program Description**

The After-Zone Middle School Initiative provides out of school time and summer programming for youth. The program supports children and families through service projects, STEM learning, cultural art activities, leadership development, fitness, and the exploration of career fields or colleges aligned with the youths interests. Power Hour: Making Minutes Count will be offered before school begins and will be dedicated to homework assistance and tutoring.

### **Target Population Served**

Students in 6th, 7th, or 8th grade at Pierce, Marshall, Shields, or Tomlin Middle School

### **Service Area/Geographic Focus:**

Town 'N Country, Plant City, Ruskin, and Wimauma

**Bilingual Services:** Yes - Spanish

**Funding Amount:** \$545,000

### **Contact Information:**

**Address:** 1307 North MacDill Avenue  
Tampa, FL 33607

**Phone:** (813) 769-7533

**Website:** [www.bgctampa.org](http://www.bgctampa.org)

**Social Media:** Facebook: [Boys and Girls Clubs of Tampa Bay](#)

Twitter: [@bgctampa](#)

Instagram: [@bgctampa](#)

**Subcontracts:** None

# BOYS & GIRLS CLUBS OF TAMPA BAY

## *Brandon Art Masters! (BAM!)*

### **Program Description**

Brandon Art Masters provides elementary school students a high-quality art instruction and exposure after-school program. Working with professional artists and materials, students explore a variety of art mediums and showcase their work to the public two times per year. This program includes art-focused field trips.

### **Target Population Served**

Children in kindergarten through 5th grade

### **Service Area/Geographic Focus:**

Carey Brandon Club

**Bilingual Services:** No

**Funding Amount:** \$87,514

### **Contact Information:**

**Address:** 510 East Sadie Street  
Brandon, FL 33510

**Phone:** (813) 444-0375

**Website:** [www.bgctampa.org](http://www.bgctampa.org)

**Social Media:** Facebook: [Boys and Girls Clubs of Tampa Bay](#)

Twitter: [@bgctampa](#)

Instagram: [@bgctampa](#)

**Subcontracts:** None

## *Baby Bungalow*

### **Program Description**

Baby Bungalow is an early childhood resource center for parents and caregivers. New and experienced parents alike can benefit from the wide variety of adult-child playgroups, workshops, developmental screenings and other activities.

### **Target Population Served**

All services are for “any baby, any family” in Hillsborough County

### **Service Area/Geographic Focus:**

Hillsborough County

**Bilingual Services:** Yes - Spanish

**Funding Amount:** \$275,763

### **Contact Information:**

**Address:** 3108 West Azelee Street  
Tampa, FL 33609

**Phone:** (813) 673-4646

**Website:** [www.cfctb.org/program/baby-bungalow](http://www.cfctb.org/program/baby-bungalow)

**Social Media:** Facebook: [Baby Bungalow](#)  
Twitter: [@cfctampabay](#)  
Instagram: [@cfctampabay](#)

**Subcontracts:** None

## *Family Focus*

### **Program Description**

The Family Focus program provides prenatal and postpartum education and support to adults with substance abuse and behavioral health concerns who are pregnant or are parenting children birth through middle school. The program will support children and families by offering intensive case management services, developmental screenings, parenting education and support to promote the birth of healthy newborns. The program is designed to support the positive relationships of moms, dads, and child to promote the birth of substance free babies.

### **Target Population Served**

Pregnant and parenting mothers and fathers

### **Service Area/Geographic Focus:**

Participants in treatment at Cove Behavioral Health in Hillsborough County

**Bilingual Services:** Yes - Spanish

**Funding Amount:** \$470,446

### **Contact Information:**

- Address:** 4422 East Columbus Drive  
Tampa, FL 33605
- Phone:** (813) 673-4646 Ext. 7000
- Website:** [www.cfctb.org](http://www.cfctb.org)
- Social Media:** Facebook: [Champions for Children](#)  
Twitter: [@cfctampabay](#)  
Instagram: [@cfctampabay](#)
- Subcontracts:** Cove Behavioral Health, Inc.

## *Layla's House*

### **Program Description**

Layla's House is in the heart of Sulphur Springs and is a community-based learning and resource center that provides playgroups, workshops, developmental checkups, community activities and support for parents and caregivers with children birth to age five as well as for expectant moms and dads.

### **Target Population Served**

All services are for "any baby, any family" in Hillsborough County

### **Service Area/Geographic Focus:**

Hillsborough County

**Bilingual Services:** Yes - Spanish

**Funding Amount:** \$403,742

### **Contact Information:**

**Address:** 1506 East Eskimo Avenue  
Tampa, FL 33604

**Phone:** (813) 443-5004

**Website:** [www.cfctb.org](http://www.cfctb.org)

**Social Media:** Facebook: [Layla's House](#)  
Twitter: [@cfctampabay](#)  
Instagram: [@cfctampabay](#)

**Subcontracts:** None

# CHAMPIONS FOR CHILDREN

## *Parents as Teachers (PAT)*

### **Program Description**

The Parents as Teachers (PAT) program provides families with a personal parent educator who visits the home and support groups meet monthly. PAT provides learning activities for the child, models age appropriate activities, introduces the use of books into play, and hosts other fun activities to prepare the child for school. The program offers screenings in overall development.

### **Target Population Served**

Parents and caregivers of young children birth to age five

### **Service Area/Geographic Focus:**

Hillsborough County

**Bilingual Services:** Yes - Spanish and Creole

**Funding Amount:** \$1,322,106

### **Contact Information:**

**Address:** 3108 West Azelee Street  
Tampa, FL 33609

**Phone:** (813) 673-4646

**Website:** [www.cfctb.org](http://www.cfctb.org)

**Social Media:** Facebook: [Champions for Children](#)  
Facebook: [Parents As Teachers Tampa](#)  
Twitter: [@cfctampabay](#)  
Instagram: [@cfctampabay](#)

**Subcontracts:** None

## *Kinship Hillsborough*

### **Program Description**

The Kinship Hillsborough program supports children residing with a relative caregiver or another caring adult by providing case management, support groups, and developmental screenings. The program provides in-home wellness services to caregivers with health-related concerns. In addition, Bay Area Legal Services provides education on custody matters, and supports family stability to ensure the safety, social-emotional and academic needs of the children are met.

### **Target Population Served**

Relative and non-relative caregivers with children birth through enrolled in middle school

### **Service Area/Geographic Focus:**

Hillsborough County

**Bilingual Services:** Yes - Spanish

**Funding Amount:** \$545,000

### **Contact Information:**

**Address:** 3450 Buschwood Park Drive, Suite #195  
Tampa, FL 33618

**Phone:** (888) 920-8761 or (813) 901-3409

**Website:** [www.childrenshomenetwork.org](http://www.childrenshomenetwork.org)

**Social Media:** Facebook: [Children's Home Network](#)

Facebook: [CHNKinship](#)

Instagram: [@childrenhomenet](#)

Twitter: [@childrenhomenet](#)

**Subcontracts:** None

# CHILDREN'S HOME NETWORK

*Reaching and Inspiring Students Everywhere (RAISE)*

## **Program Description**

Reaching and Inspiring Students Everywhere (RAISE) provides children from birth through 3rd grade and their families with access to services that promote positive behavioral, developmental, and educational success. The program works with children who are at risk of having experienced trauma, presenting challenging behaviors, developmental delay or a diagnosed disability affecting a child's readiness for school, or academic performance.

## **Target Population Served**

Children birth to 3rd grade and their families

## **Service Area/Geographic Focus:**

Hillsborough County

**Bilingual Services:** Yes - Spanish

**Funding Amount:** \$1,015,509

## **Contact Information:**

**Address:** 3450 Buschwood Park Drive, Suite #195  
Tampa, FL 33618

**Phone:** (813) 901-3439

**Website:** [www.childrenshomenetwork.org](http://www.childrenshomenetwork.org)

**Social Media:** Facebook: [Children's Home Network](#)

Instagram: [@childrenhomenet](#)

Twitter: [@childrenhomenet](#)

**Subcontracts:** None



# CHILDREN'S HOME NETWORK

*Supporting and Empowering Educational and Developmental Services (SEEDS)*

## **Program Description**

SEEDS provides case management services and referrals with an emphasis on engaging families in their child's educational, social and developmental experiences. The program works with teachers to coordinate services and support success in school. It offers a family assessment, literacy support services for students and shares community resources with all families.

## **Target Population Served**

Children birth to 3rd grade and their families

## **Service Area/Geographic Focus:**

Hillsborough County

**Bilingual Services:** Yes - Spanish and Creole

**Funding Amount:** \$2,142,400

## **Contact Information:**

**Address:** 3450 Buschwood Park Drive, Suite #195  
Tampa, FL 33618

**Phone:** (813) 901-3439

**Website:** [www.childrenshomenetwork.org](http://www.childrenshomenetwork.org)

**Social Media:** Facebook: [Children's Home Network](#)  
Instagram: [@childrenhomenet](#)  
Twitter: [@childrenhomenet](#)

**Subcontracts:** None

# DAWNING FAMILY SERVICES

## *A Path to Prevention*

### **Program Description**

A Path to Prevention provides case management services to families who are at-risk of being homeless by providing services to help them maintain or access stable housing. Case Managers also help them apply for public benefits, obtain identity documents, employment guidance, referrals to community resources, as well as support with legal and financial assistance.

### **Target Population Served**

Pregnant women and families with children birth to eighteen

### **Service Area/Geographic Focus:**

Hillsborough County

**Bilingual Services:** Yes - Spanish

**Funding Amount:** \$322,373

### **Contact Information:**

**Address:** 6718 North Armenia Avenue  
Tampa, FL 33604

**Phone:** (813) 875-2024

**Website:** [www.DawningFamilyServices.org](http://www.DawningFamilyServices.org)

**Social Media:** Facebook: [Dawning Family Services](https://www.facebook.com/DawningFamilyServices)  
Twitter: [@dawningfs](https://twitter.com/dawningfs)  
Instagram: [@dawningfamilyservices](https://www.instagram.com/dawningfamilyservices)

**Subcontracts:** None

# DAWNING FAMILY SERVICES

## *Housing for Success*

### **Program Description**

Housing for Success provides emergency shelter and support services for families with children under the age of 18 who are experiencing homelessness. Families receive individualized, wrap around case management to assist them in ending their homelessness through housing search and placement; financial assistance for housing; referrals to community resources; and post-shelter services to ensure stability.

### **Target Population Served**

Homeless families with children birth to 18

### **Service Area/Geographic Focus:**

Hillsborough County

**Bilingual Services:** Yes - Spanish

**Funding Amount:** \$244,267

### **Contact Information:**

**Address:** 6718 North Armenia Avenue  
Tampa, FL 33604

**Phone:** (813) 875-2024

**Website:** [www.DawningFamilyServices.org](http://www.DawningFamilyServices.org)

**Social Media:** Facebook: [Dawning Family Services](https://www.facebook.com/DawningFamilyServices)

Twitter: [@dawningfs](https://twitter.com/dawningfs)

Instagram: [@dawningfamilyservices](https://www.instagram.com/dawningfamilyservices)

**Subcontracts:** None

# EARLY CHILDHOOD COUNCIL OF HILLSBOROUGH COUNTY

## *Community Developmental Screening*

### **Program Description**

The Community Developmental Screening Program provides monthly community-based developmental screening events for children birth to five years of age. When warranted, the program connects families of children with developmental concerns to appropriate follow-up services (e.g. formal evaluation providers, early intervention, or community based supports). Screenings are conducted in the areas of vision, hearing, speech/language, behavior, and overall development.

### **Target Population Served**

Children birth to five years of age who are not yet in kindergarten

### **Service Area/Geographic Focus:**

Hillsborough County

**Bilingual Services:** Yes - Spanish

**Funding Amount:** \$684,207

### **Contact Information:**

**Address:** P.O. Box 130449  
Tampa, FL 33681

**Email:** [screeningmanager@ecctampabay.org](mailto:screeningmanager@ecctampabay.org)

**Website:** [www.ecctampabay.org](http://www.ecctampabay.org)

**Social Media:** Facebook: [Ecctampabay](https://www.facebook.com/Ecctampabay)

**Subcontracts:** None

# EARLY CHILDHOOD COUNCIL OF HILLSBOROUGH COUNTY

## *Inclusion Support Services*

### **Program Description**

Inclusion Support Services provides child care centers and family child care homes with resources and training to support early childhood development and/or behavioral concerns. Services include on-site observations of children/teachers/classrooms to develop an intervention plan based on strengths, needs, and accommodations for an inclusive setting. An individualized in-home parent education service will bridge continuity of care between the educational setting to the home.

### **Target Population Served**

Early childhood professionals and families with children, birth to five years of age, in private pay or VPK child care center or family day care home

### **Service Area/Geographic Focus:**

Hillsborough County

**Bilingual Services:** Yes - Spanish

**Funding Amount:** \$507,287

### **Contact Information:**

**Address:** P.O. Box 130449  
Tampa, FL 33681

**Email:** [inclusionmanager@ecctampabay.org](mailto:inclusionmanager@ecctampabay.org)

**Website:** [www.ecctampabay.org](http://www.ecctampabay.org)

**Social Media:** Facebook: [Ecctampabay](https://www.facebook.com/Ecctampabay)

**Subcontracts:** None

# EARLY LEARNING COALITION OF HILLSBOROUGH COUNTY

## *School Readiness Funding*

### **Program Description**

The School Readiness program provides financial assistance to eligible families so they may have access to a network of early care and education programs to help ensure they enter kindergarten ready to succeed. Parents may apply online at [www.elchc.org](http://www.elchc.org).

### **Target Population Served**

Children birth to nine years of age. Priority is given to children whose parents are economically disadvantaged, children who have been determined to be at risk of abuse, neglect or exploitation, and children with special needs

### **Service Area/Geographic Focus:**

Hillsborough County

**Bilingual Services:** Yes - Spanish

**Funding Amount:** \$775,770

### **Contact Information:**

**Address:** 6302 East Dr. Martin Luther King Jr Boulevard  
Suite #100  
Tampa, FL 33619

**Phone:** (813) 515-2340

**Website:** [www.elchc.org](http://www.elchc.org)

**Social Media:** Facebook: [Early Learning Coalition of Hillsborough County](#)

Twitter: [@elchillsborough](#)

Instagram: [@elchillsborough](#)

**Subcontracts:** None

## *Early Learning and Intervention Program*

### **Program Description**

The Early Learning and Intervention Program provides gap early intervention services for children birth to five years old experiencing delays in development but may not meet the eligibility criteria for Early Steps or Child Find. Easterseals offers caregiver/child intervention services, parent education, and service coordination. It is an in-home program with an option of some service occurring in the child's school setting.

### **Target Population Served**

Parents with children birth to five who are not eligible for services through Early Steps or Child Find

### **Service Area/Geographic Focus:**

Hillsborough County

**Bilingual Services:** Yes - Spanish

**Funding Amount:** \$494,922

### **Contact Information:**

**Address:** 2403 East Henry Avenue  
Tampa, FL 33610

**Phone:** (813) 868-7191

**Website:** [www.easterseals.com/florida](http://www.easterseals.com/florida)

**Social Media:** Facebook: [Easterseals Florida](https://www.facebook.com/EastersealsFlorida)  
Twitter: [@EasterSealsFL](https://twitter.com/EasterSealsFL)  
Instagram: [@EasterSealsFL](https://www.instagram.com/EasterSealsFL)

**Subcontracts:** None

*Kinship Care*

**Program Description**

The Kinship Care program provides intensive case management for children residing with a relative caregiver or with another caring adult. Services include compassionate help, training, advocacy, support groups, respite care, legal support, health aide, educational support and access to community resources or referrals.

**Target Population Served**

Children birth through 8th grade

**Service Area/Geographic Focus:**

Hillsborough County

**Bilingual Services:** No

**Funding Amount:** \$393,066

**Contact Information:**

**Address:** 1002 East Dr. Martin Luther King Jr. Boulevard  
Tampa, FL 33603

**Phone:** (813) 237-2530

**Website:** [www.fectampa.org](http://www.fectampa.org)

**Social Media:** Facebook: [Family Enrichment Center](#)

**Subcontracts:** None



## *Connecting Kids to Care*

### **Program Description**

Connecting Kids to Care (CKC) is a program designed to reduce the number of eligible but uninsured children through enrollment in healthcare coverage and connecting them to appropriate care. CKC assists families with completing application or coverage renewal support. The program provides education to families and professionals to promote access to quality healthcare.

### **Target Population Served**

Families with children birth through middle school age

### **Service Area/Geographic Focus:**

Hillsborough County

**Bilingual Services:** Yes - Spanish

**Funding Amount:** \$243,076

### **Contact Information:**

**Phone:** (813) 362-1413

**Website:** [www.FamilyHealthcareFdn.org](http://www.FamilyHealthcareFdn.org)

**Social Media:** Facebook: [FamilyHealthcarefdn](https://www.facebook.com/FamilyHealthcarefdn)

Instagram: [@thefamilyhealthcarefoundation](https://www.instagram.com/thefamilyhealthcarefoundation)

**Subcontracts:** None

## *Girl Scout Troop Program*

### **Program Description**

The Girl Scout Troop Program is designed to equip girls in kindergarten to fifth grade reach her full potential. Girls will participate in the Girl Scout Leadership Experience (GSLE) which offers a strong sense of self, positive values, challenge seeking, healthy relationships, and community problem solving. The GSLE combines a variety of activities with supportive, mentoring relationships and the three Girl Scout processes (Girl-Led, Cooperative Learning, and Learning by Doing). The program is supported by a tradition-driven, emotionally safe space for girls.

### **Target Population Served**

Girls from kindergarten to fifth grade

### **Service Area/Geographic Focus:**

Serving girls in the following zip codes: 33603, 33604, 33610 & 33619

**Bilingual Services:** Yes - Spanish

**Funding Amount:** \$322,118

### **Contact Information:**

**Address:** 4610 Eisenhower Boulevard  
Tampa, FL 33603

**Phone:** (813) 281-4475

**Website:** [www.gswcf.org](http://www.gswcf.org)

**Social Media:** Facebook: [Girl Scouts of West Central Florida](#)

Instagram: [@gswcf](#)

Twitter: [@gswcf](#)

**Subcontracts:** None

# GLAZER CHILDREN'S MUSEUM

## *Children's Board Free Tuesday*

### **Program Description**

Children's Board Free Tuesday provides free admission into Glazer Children's Museum for children and their parents or caregivers on the first Tuesday of each month. Monthly free admission will be offered from 9:30am to 5pm. (Hours subject to change in summer months).

### **Target Population Served**

Families with children birth to ten years of age

### **Service Area/Geographic Focus:**

Hillsborough County

**Bilingual Services:** Yes - Spanish

**Funding Amount:** \$73,089

### **Contact Information:**

**Address:** 110 West Gasparilla Plaza  
Tampa, FL 33602

**Phone:** (813) 443-3861

**Website:** [www.glazermuseum.org](http://www.glazermuseum.org)

**Social Media:** Facebook: [Glazer Children's Museum](#)

Twitter: [@GlazerMuseum](#)

Instagram: [@glazerchildrensmuseum](#)

**Subcontracts:** None

## *Learn & Play Tampa Bay*

### **Program Description**

The Learn & Play Tampa Bay program provides quality early learning experiences at the seven Children's Board Family Resource Centers and other designated Hillsborough County sites. The program delivers weekly in-person developmental classes and provides take home activities that promote early learning and school readiness.

### **Target Population Served**

Children birth to age five and their parents or caregivers

### **Service Area/Geographic Focus:**

Hillsborough County

### **Bilingual Services:**

**Funding Amount:** \$342,550

### **Contact Information:**

**Address:** 110 West Gasparilla Plaza  
Tampa, FL 33602

**Phone:** (833) 426-7529

**Website:** [www.glazermuseum.org](http://www.glazermuseum.org)

**Social Media:** Facebook: [LearnPlayTampaBay](https://www.facebook.com/LearnPlayTampaBay)

Twitter: [@GlazerMuseum](https://twitter.com/GlazerMuseum)

Instagram: [@glazerchildrensmuseum](https://www.instagram.com/glazerchildrensmuseum)

**Subcontracts:** None

## *Pop Up Play in Plant City*

### **Program Description**

Pop Up Play in Plant City is an exhibition program of Glazer Children's Museum that provides purposeful play to families, featuring rotating hands-on exhibit experiences designed for children ages birth to eight. These exhibits change three times per year, and are free to families who visit. These exhibits are located at the Plant City Children's Board Family Resource Center (301 North Palmer St. Tampa FL 33563).

### **Target Population Served**

Families with children birth through age eight

### **Service Area/Geographic Focus:**

East Hillsborough County

**Bilingual Services:** Yes - Spanish

**Funding Amount:** \$119,974

### **Contact Information:**

**Address:** 110 West Gasparilla Plaza  
Tampa, FL 33602

**Phone:** (813) 443-3861

**Website:** [www.glazermuseum.org](http://www.glazermuseum.org)

**Social Media:** Facebook: [Glazer Children's Museum](https://www.facebook.com/GlazerChildrensMuseum)

Twitter: [@GlazerMuseum](https://twitter.com/GlazerMuseum)

Instagram: [@glazerchildrensmuseum](https://www.instagram.com/glazerchildrensmuseum)

**Subcontracts:** None



## GULF COAST JEWISH FAMILY AND COMMUNITY SERVICES

### *Good Afternoon Friends and Amigos*

#### **Program Description**

Good Afternoon Friends and Amigos is an after school program that provides tutoring and homework assistance. Parents or caregivers of the students will be involved in their education, development, and family activities. Home visitation resources are available to parents and caregivers to help meet the child's identified needs.

#### **Target Population Served**

Kindergarten through 5th grade students enrolled at Reddick and Robinson Elementary schools

#### **Service Area/Geographic Focus:**

Wimauma and Plant City

#### **Bilingual Services:** Yes - Spanish

#### **Funding Amount:** \$383,099

#### **Contact Information:**

- Address:** 14041 Icot Boulevard  
Clearwater, FL 33760
- Phone:** (727) 479-1800, extension # 3101
- Website:** [www.gulfcoastjewishfamilyandcommunityservices.org](http://www.gulfcoastjewishfamilyandcommunityservices.org)
- Social Media:** Facebook: [Gulf Coast JFCS](#)  
Twitter: [@GulfCoastJFCS](#)  
Instagram: [@GulfCoastJFCS](#)
- Subcontracts:** None

# GULF COAST JEWISH FAMILY AND COMMUNITY SERVICES

## *Teen Parent Engagement Program*

### **Program Description**

The Teen Parent Engagement Program is a leadership program for teen moms and dads. Our primary strategies are a diverse mix of workshops, home visitation, education, screening, mentoring, and case management. On-going engagement activities include training comprised of a two-day group retreat, monthly group workshops, varied mentorship experiences, and in-home visits. In-home visits include case management, developmental screenings, and parenting education.

### **Target Population Served**

Pregnant Teens and Parents ages fourteen to nineteen years of age

### **Service Area/Geographic Focus:**

Hillsborough County

**Bilingual Services:** Yes - Spanish and Creole

**Funding Amount:** \$448,454

### **Contact Information:**

**Address:** 3550 West Waters Avenue, Suite #250

Tampa, FL 33614

**Phone:** (813) 930-7103

**Website:** [www.gcjfcfs.org](http://www.gcjfcfs.org)

**Social Media:** Facebook: [Gulf Coast JFCS](#)

Twitter: [@GulfCoastJFCS](#)

Instagram: [@GulfCoastJFCS](#)

**Subcontracts:** None

# HEALTHY START COALITION OF HILLSBOROUGH COUNTY

## *Healthy Families Hillsborough*

### **Program Description**

Healthy Families Hillsborough is a nationally accredited home visitation program that supports parents by offering wrap-around services during and after pregnancy. The program offers personal and emotional support, parenting education, child developmental screenings, and helps to set goals that are individual to participating families with children up to age five. Services are voluntary and flexible to work with busy schedules.

### **Target Population Served**

Parents expecting a baby or have a baby less than two months of age

### **Service Area/Geographic Focus:**

Hillsborough County

**Bilingual Services:** Yes - Spanish

**Funding Amount:** \$2,069,153

### **Contact Information:**

**Address:** 2806 North Armenia Avenue, Suite #100  
Tampa, FL 33607

**Phone:** (813) 233-2800

**Website:** [www.healthystartcoalition.org](http://www.healthystartcoalition.org)

**Social Media:** Facebook: [HSCHillsborough](https://www.facebook.com/HSCHillsborough)  
Twitter: [@HSCHillsborough](https://twitter.com/HSCHillsborough)  
Instagram: [@HealthyStartHillsborough](https://www.instagram.com/HealthyStartHillsborough)

**Subcontracts:** Champions for Children  
Children's Home Network  
Success 4 Kids & Families



# HEALTHY START COALITION OF HILLSBOROUGH COUNTY

## *HealthySteps Hillsborough*

### **Program Description**

HealthySteps Hillsborough supports families and their children age birth to three years by providing parenting education, information, referrals, and care coordination. Based in pediatric offices, HealthySteps Hillsborough connects with families during and between well-child visits to assist families with parenting concerns and challenges and meet families' specific needs to support strong parent/child attachment and healthy child development.

### **Target Population Served**

Families with children age birth to three years who are pediatric care patients of Tampa General Hospital Brandon HealthPlex, USF Complex Care Clinics, and HealthPark Pediatrics

### **Service Area/Geographic Focus:**

Hillsborough County

**Bilingual Services:** Yes - Spanish

**Funding Amount:** \$695,809

### **Contact Information:**

**Address:** 2806 North Armenia Avenue, Suite #100  
Tampa, FL 33607

**Phone:** (813) 539-0884

**Website:** [www.healthystartcoalition.org](http://www.healthystartcoalition.org)

**Social Media:** Facebook: [HSCHillsborough](https://www.facebook.com/HSCHillsborough)

Twitter: [@HSCHillsborough](https://twitter.com/HSCHillsborough)

Instagram: [@HealthyStartHillsborough](https://www.instagram.com/HealthyStartHillsborough)

**Subcontracts:** None

# HEALTHY START COALITION OF HILLSBOROUGH COUNTY

## *Safe Baby Plus*

### **Program Description**

Safe Baby Plus is an educational program delivered to parents prior to hospital discharge with a newborn addressing the three leading causes of preventable infant death including; choosing a safe caregiver, preventing shaken baby syndrome, and practicing safe sleep. The program provides a developmental screening program for infants during their first year of life. The program also provides increased access and linkages to resources and safety education for pregnant women and women with children who are receiving the Special Supplemental Nutrition Program at Hillsborough County WIC sites. Safe Baby training and educational materials are also offered by certified Safe Baby instructors to early childhood professionals.

### **Target Population Served**

Families with infants and professionals such as nurses, physicians, social workers or child welfare staff

### **Service Area/Geographic Focus:**

Hillsborough County

**Bilingual Services:** Yes - Spanish

**Funding Amount:** \$1,307,664

### **Contact Information:**

**Address:** 2806 North Armenia Avenue, Suite #100  
Tampa, FL 33607

**Phone:** (813) 849-7999

**Website:** [www.healthysafebaby.org](http://www.healthysafebaby.org)

**Social Media:** Facebook: [HSCHillsborough](https://www.facebook.com/HSCHillsborough)

Twitter: [@HSCHillsborough](https://twitter.com/HSCHillsborough)

Instagram: [@HealthyStartHillsborough](https://www.instagram.com/HealthyStartHillsborough)

**Subcontracts:** Success 4 Kids & Families  
St. Joseph's Hospital

## *Quality Early Education System*

### **Program Description**

The Quality Early Education System supports children and families by providing training, coaching, professional development, resources and targeted specialized early childhood program intervention to enhance the quality of operations and learning environment.

The Conscious Awareness Learning Model (CALM) provides trainings and on-site instruction to teachers and families in social-emotional learning using the Conscious Discipline® approach to implement model activities in the classroom.

Literacy coaches work to develop pre-reading skills through small group activities with teachers in preschool settings. In addition, parents or caregivers receive books and literacy activities to use at home.

### **Target Population Served**

Early Childhood Education providers and families with children birth to age five

### **Service Area/Geographic Focus:**

Hillsborough County

**Bilingual Services:** Yes - Spanish

**Funding Amount:** \$2,519,870

### **Contact Information:**

**Address:** 1602 North 15th Street, Suite #248

Tampa, FL 33605

**Phone:** (813) 259-6415

**Website:** [www.calmhcc.org](http://www.calmhcc.org)

[www.earlyliteracymatters.com](http://www.earlyliteracymatters.com)

**Social Media:** Twitter: [@HCC\\_QEES](https://twitter.com/HCC_QEES)

Instagram: [@HCCQEES](https://www.instagram.com/HCCQEES)

**Subcontracts:** None

*Tech Connect*

**Program Description**

Tech Connect program equips students that are technologically challenged with the tools and knowledge required for digital access. Project staff work in collaboration with Hillsborough County Public Schools to help identify and plan for students.

**Target Population Served**

Families with elementary age school students enrolled in public schools (not virtual school) throughout Hillsborough County

**Service Area/Geographic Focus:**

Hillsborough County

**Bilingual Services:** Yes - Spanish

**Funding Amount:** \$399,654

**Contact Information:**

**Address:** 2306 North Howard Avenue  
Tampa, FL 33607-2613

**Phone:** (813) 574-0283

**Website:** [www.educationfoundation.com](http://www.educationfoundation.com)

**Social Media:** Facebook: [Hillsborough Education Foundation](#)

Twitter: [@Hillsedufnd](#)

Instagram: [@Hillsedufnd](#)

**Subcontracts:** None

## *La Red de Padres Activos / Network of Active Parents*

### **Program Description**

La Red de Padres Activos is a parent engagement and family strengthening program that seeks to engage Latino parents in the education of their children and support the parent's own personal growth and development by hosting weekly workshops to educate parents about resources, parenting skills, child development stages, and navigation of the school system so that they may better understand their role and be more involved in their child's success in school. While the parents participate in social networking and educational workshops, La Red engages their children in literacy and learning activities.

### **Target Population Served**

Latino parents with children three years of age through 8th grade

### **Service Area/Geographic Focus:**

Plant City, North Tampa, West Tampa, Drew Park, Brandon and Ruskin/Wimauma

**Bilingual Services:** Yes - Spanish

**Funding Amount:** \$1,036,151

### **Contact Information:**

**Address:** 7825 North Dale Mabry Hwy, Suite #102  
Tampa, FL 33614

**Phone:** (813) 936-7700

**Website:** [www.Hispanicservicescouncil.org](http://www.Hispanicservicescouncil.org)

**Social Media:** Facebook: [Hispanic Services Council](https://www.facebook.com/HispanicServicesCouncil)  
Twitter: [@HispanicSVC](https://twitter.com/HispanicSVC)

**Subcontracts:** None

## *Building Family Financial Skills*

### **Program Description**

Building Family Financial Skills provides financial wellness training for parents/caregivers. The program is delivered in four interactive sessions that uses tools to build everyone's own financial wellness plan and connect families to local financial related sources. A guest speaker from a financial institution is present for one session in each series to present material and to use as a resource.

### **Target Population Served**

Families with children birth to eight years of age

### **Service Area/Geographic Focus:**

Zip codes with ALICE populations greater than or equal to the Hillsborough County average of 42%

**Bilingual Services:** Yes - Spanish

**Funding Amount:** \$92,310

### **Contact Information:**

**Address:** 5301 West Cypress Street  
Tampa, FL 33607

**Phone:** (813) 341-9199

**Website:** [www.thafl.com](http://www.thafl.com)

**Social Media:** Facebook: [Tampa Housing Authority](#)  
Twitter: [@THAuthority](#)

**Subcontracts:** None

## *Village Link Up*

### **Program Description**

Village Link Up provides case management, parent education, and supportive services with the goal of increasing parent engagement in child education and overall family well-being. The coordination of services to families supports the educational goals and academic success of children. The program assists in the development of a support plan with families, hosts educational workshops and offers referrals to community resources.

### **Target Population Served**

Parents/caregivers with children in elementary school

### **Service Area/Geographic Focus:**

Robles Park Village, C. Blythe Andrews, Seminole Park and Belmont Heights

**Bilingual Services:** Yes - Spanish

**Funding Amount:** \$318,942

### **Contact Information:**

**Address:** 5301 West Cypress Street  
Tampa, FL 33607

**Phone:** (813) 341-9101 x2140

**Website:** [www.thafl.com](http://www.thafl.com)

**Social Media:** Facebook: [Tampa Housing Authority](#)  
Twitter: [@THAuthority](#)

**Subcontracts:** None

## *Woven Empowerment – WE Program*

### **Program Description**

The WE Program collaborates with families to provide children from birth to age eight person-centered and strengths-based case management, mentoring, educational workshops, and tangible assistance for basic needs. In the WE Program, families stabilize while decreasing their stress and increasing their support systems.

### **Target Population Served**

Families with children up to age eight who have been impacted by homelessness or are at risk of homelessness

### **Service Area/Geographic Focus:**

Target zip codes of 33603, 33604, 33605, 33610, and 33612

**Bilingual Services:** No

**Funding Amount:** \$92,906

### **Contact Information:**

**Address:** 3309 N 15th St  
Tampa, FL 33605

**Phone:** (813) 803-0220

**Website:** [www.justinitiative.com](http://www.justinitiative.com)

**Social Media:** Facebook: [@justinitiative](https://www.facebook.com/justinitiative)  
Twitter: [@justinitiative](https://twitter.com/justinitiative)  
Instagram: [@justinitiative](https://www.instagram.com/justinitiative)

**Subcontracts:** None



# METROPOLITAN MINISTRIES

## *C.R.E.A.T.E. School Age Program*

### **Program Description**

The Children's Recreation, Education, Arts and Therapeutic Experience (C.R.E.A.T.E.) is an after-school program providing children with a nurturing therapeutic environment designed to alleviate the impacts of trauma and homelessness. It offers cooperative play, Science, Technology, Engineering, Art and Math (STEAM) activities and engages parents or caregivers in family events.

### **Target Population Served**

Elementary age children experiencing or who have experienced homelessness or housing instability

### **Service Area/Geographic Focus:**

Elementary age children who reside at Miracle Place or attend Sullivan or Mango Elementary

**Bilingual Services:** Yes - Spanish

**Funding Amount:** \$543,448

### **Contact Information:**

**Address:** 2002 North Florida Avenue  
Tampa, FL 33602

**Phone:** (813) 209-1000

**Website:** [www.metromin.org](http://www.metromin.org)

**Social Media:** Facebook: [Metropolitan Ministries](#)

Twitter: [@metroministries](#)

Instagram: [@metro\\_min](#)

**Subcontracts:** None

# METROPOLITAN MINISTRIES

## *First Hug*

### **Program Description**

First Hug is an intensive case management program that uses a trauma informed care approach to stabilize homeless families and address barriers to self-sufficiency. Services include connecting families to community resources, early intervention or education, child care, employment, housing search/placement, and home safety.

### **Target Population Served**

Homeless families with children birth through middle school

### **Service Area/Geographic Focus:**

Hillsborough County

**Bilingual Services:** Yes - Spanish

**Funding Amount:** \$1,393,214

### **Contact Information:**

**Address:** 2002 North Florida Avenue  
Tampa, FL 33602

**Phone:** (813) 209-1006

**Website:** [www.metromin.org](http://www.metromin.org)

**Social Media:** Facebook: [Metropolitan Ministries](https://www.facebook.com/MetropolitanMinistries)  
Twitter: [@metroministries](https://twitter.com/metroministries)  
Instagram: [@metro\\_min](https://www.instagram.com/metro_min)

**Subcontracts:** None



***One More Child Family Support*****Program Description**

The Family Support Program at One More Child provides help to families that are experiencing tough times and need a little extra support. Using evidence-based practices our team provides training and assistance that will improve parenting skills, develop household management strategies and increase wraparound support to strengthen families. This program uses an individualized approach that will help parents better connect with their children, reduce stress, and increase meaningful connections to community supports. Services are provided in a combination of settings, both in home and in the community.

**Target Population Served**

Parents/Caregivers with children from birth through age eight

**Service Area/Geographic Focus:**

33603, 33605, 33610, 33612, and 33617

**Bilingual Services:** Yes - Spanish

**Funding Amount:** \$140,000

**Contact Information:**

**Address:** 4038 North Falkenburg Road  
Tampa, FL 33610

**Phone:** (813) 252-9762

**Website:** [www.onemorechild.org](http://www.onemorechild.org)

**Social Media:** Facebook: [@OneMoreChildSince1904](https://www.facebook.com/OneMoreChildSince1904)

Instagram: [@onemorechild](https://www.instagram.com/onemorechild)

Twitter: [@One\\_MoreChild](https://twitter.com/One_MoreChild)

**Subcontracts:** None

# PARENTS AND CHILDREN ADVANCE TOGETHER (PCAT) LITERACY MINISTRIES

## *South County Literacy Initiative*

### **Program Description**

The South County Literacy Initiative is an after school program designed to assist low performing students by increasing their reading and comprehension skills with one-on-one or group instruction. An individualized instruction plan is developed with teachers. Parents are engaged by bilingual personnel, as needed, to involve them in their child's educational success.

### **Target Population Served**

Kindergarten, 1st and 2nd grade students attending Ruskin Elementary

### **Service Area/Geographic Focus:**

Ruskin

**Bilingual Services:** Yes - Spanish

**Funding Amount:** \$454,942

### **Contact Information:**

**Address:** 5004 East Fowler Avenue, Suite C-345  
Tampa, FL 33617

**Phone:** (813) 598-2103

**Website:** [www.pcatliteracyministries.org](http://www.pcatliteracyministries.org)

**Social Media:** None

**Subcontracts:** None

# PARENTS AND CHILDREN ADVANCE TOGETHER (PCAT) LITERACY MINISTRIES

## *Sulphur Springs Literacy Initiative*

### **Program Description**

The PCAT Literacy program provides after school tutoring to kindergarten students who are reading below level. Students are referred to our program by their classroom teacher and are eligible to receive tutoring two days a week in a small group or one-on-one setting.

### **Target Population Served**

Kindergarten students

### **Service Area/Geographic Focus:**

Sulphur Springs K-8 Community School

**Bilingual Services:** Yes - Spanish, French and Haitian Creole

**Funding Amount:** \$141,651

### **Contact Information:**

**Address:** 5004 East Fowler Avenue, Suite C-345  
Tampa, FL 33617

**Phone:** (813) 467-6826

**Website:** [www.pcatliteracyministries.org](http://www.pcatliteracyministries.org)

**Social Media:** None

**Subcontracts:** None

### *Empowering a Community with Hope (E.A.C.H. One)*

#### **Program Description**

The E.A.C.H. One Initiative provides in-home support and case management services for families. The services support overall wellbeing through family team conferencing and developing support plans to address identified needs. Developmental screenings are offered to young children and support groups are available to youth.

#### **Target Population Served**

Families with children birth through 8th grade

#### **Service Area/Geographic Focus:**

Zip codes 33604, 33605, 33607, 33610, 33612, 33613 and 33617

**Bilingual Services:** Yes - Spanish

**Funding Amount:** \$830,937

#### **Contact Information:**

**Address:** 5118 North 56th Street, Suite #224  
Tampa, FL 33610

**Phone:** (813) 977-7677

**Website:** [www.positivespinfl.org](http://www.positivespinfl.org)

**Social Media:** Facebook: [Positive Spin Inc](#)

**Subcontracts:** None

***Children's Vision Health and Safety Services***

**Program Description**

The Children's Vision Health and Safety Services program provides vision screenings, eye safety education at the Children's Board Family Resource Centers and other community locations. It may provide eyewear for children with an identified vision condition and their parents/caregivers. The program supports children and families by providing early identification of vision health conditions, to vision care exercises, and referral for medical follow up and ongoing support to promote vision health.

**Target Population Served**

Children birth to fourteen and their parents/caregivers

**Service Area/Geographic Focus:**

Hillsborough County

**Bilingual Services:** Yes - Spanish

**Funding Amount:** \$354,546

**Contact Information:**

**Address:** 9200 Seminole Boulevard  
Seminole, FL 33772

**Phone:** (813) 874-2020

**Website:** [www.pvfla.org](http://www.pvfla.org)

**Social Media:** Facebook: [Preserve Vision Florida](#)  
Instagram: [@preservevisionflorida](#)  
Twitter: [@preservevision](#)

**Subcontracts:** None

*Giving Resources and Opportunities with Trust and Hope  
(GROWTH) with Doulas and Dads*

**Program Description**

The GROWTH with Doulas and Dads program provides pregnant women with Doula support services that promote healthy births and mother/child bonding. Parents or caregivers can receive prenatal support services, health education, mentoring, hospital labor and delivery assistance, breastfeeding, and nutritional guidance. In addition, the 24/7 Dad program increases “pro-fathering” knowledge, skills, and attitudes through structured weekly education sessions.

**Target Population Served**

Pregnant women and/or caregivers of children birth to eight weeks of age and fathers/caregivers of children birth to age fourteen

**Service Area/Geographic Focus:**

Hillsborough County

**Bilingual Services:** Yes - Spanish

**Funding Amount:** \$925,128

**Contact Information:**

**Address:** 2902 North Armenia Avenue, Suite #100  
Tampa, FL 33607

**Phone:** (813) 712-6300

**Website:** [www.reachupincorporated.org](http://www.reachupincorporated.org)

**Social Media:** Facebook: [Reachup Inc.](#)

Twitter: [@reachup\\_inc](#)

Instagram: [@Reachupincorporated](#)

**Subcontracts:** Champions For Children



## *Multilingual Citizens Program (MCP)*

### **Program Description**

The Multilingual Citizens Program (MCP) provides an evidenced-informed education program aimed at skill development critical to today's workforce, providing outcome-measured courses in English and Spanish for parents/caregivers and their children ages five to twelve through five distinct courses at Children's Board Family Resource Centers in: North Tampa, Temple Terrace, Central Tampa, Town N Country, South County, Brandon, Plant City.

### **Target Population Served**

Parents/Caregivers and children ages five to twelve

### **Service Area/Geographic Focus:**

Hillsborough County

**Bilingual Services:** Yes - Spanish

**Funding Amount:** \$503,372

### **Contact Information:**

**Address:** 8056 North 56th Street  
Tampa, FL 33617

**Phone:** (813) 530-2313

**Website:** [www.redefinergswl.org](http://www.redefinergswl.org)

**Social Media:** Facebook: [@redefinergswl](https://www.facebook.com/redefinergswl)  
Instagram: [@redefinergswl](https://www.instagram.com/redefinergswl)  
Twitter: [@redefinergswl](https://twitter.com/redefinergswl)

**Subcontracts:** None

## **Program Description**

The Read on myON Project provides access to a digital library to all children from birth through 8th grade in Hillsborough County. The program offers literacy tools and a large collection of enhanced digital books with content in English, French, and Spanish to encourage reading.

## **Target Population Served**

Children birth through 8th grade

## **Service Area/Geographic Focus:**

Hillsborough County

**Bilingual Services:** Yes - Spanish

**Funding Amount:** \$100,000

## **Contact Information:**

**Address:** 2911 Peach Street  
Wisconsin Rapids, WI 54494

**Email:** [streetteam@myon.com](mailto:streetteam@myon.com)

**Website:** [www.readonmyon.com](http://www.readonmyon.com)

**Social Media:** Facebook: [Readonmyon](https://www.facebook.com/Readonmyon)  
Twitter: [@myonreader](https://twitter.com/myonreader)

**Subcontracts:** None

## *Readers in Motion*

### **Program Description**

Readers in Motion provides intergenerational tutoring and mentoring by “grandparent” role models in Kindergarten, 1st and 2nd grade classrooms. The program also offers special activities including at home learning materials, reading challenges and STEM events for the whole family.

### **Target Population Served**

Kindergarten, 1st and 2nd grade students

### **Service Area/Geographic Focus:**

Oak Grove Elementary School

**Bilingual Services:** Yes - Spanish

**Funding Amount:** \$111,954

### **Contact Information:**

**Address:** 1306 West Sligh Avenue  
Tampa, FL 33604

**Phone:** (813) 932-5228

**Website:** [www.seniorsinservice.org](http://www.seniorsinservice.org)

**Social Media:** Facebook: [Seniors in Service](#)

**Subcontracts:** None

# SPRING OF TAMPA BAY, THE

## *Family Safety from Domestic Violence*

### **Program Description**

The Family Safety from Domestic Violence program provides case management and support services at the Outreach Office. The program offers safety planning, support groups, linkage to community resources, and assistance with filing injunctions for protection.

### **Target Population Served**

Families experiencing domestic violence

### **Service Area/Geographic Focus:**

Hillsborough County

**Bilingual Services:** Yes - Spanish

**Funding Amount:** \$350,979

### **Contact Information:**

**Address:** 211 North Willow Avenue  
Tampa, FL 33606

**Phone:** (813) 749-8764

**Website:** [www.thespring.org](http://www.thespring.org)

**Social Media:** Facebook: [The Spring TB](#)  
Twitter: [@TheSpringTB](#)  
Instagram: [@TheSpringTB](#)

**Subcontracts:** None

## *Mobile Health and Safety Education*

### **Program Description**

The Mobile Health and Safety Education program provides services to residents of Hillsborough County in community-based locations and at Children's Board Family Resource Centers.

This program includes both mobile classroom health and safety education and access to medical services through a mobile medical clinic.

The Mobile Health and Safety Education program provides classes at your site with a focus on educating children in age-appropriate ways that make learning about health, safety, and maintaining a healthy weight fun and educational. Caregiver education is also provided related to CPR/First Aid certification, car seat safety and so much more. To learn more about our classes offered and to submit a request for services please visit [www.stjoesmobile.org](http://www.stjoesmobile.org).

The Mobile Medical Clinic supports children and families by providing opportunities for caregivers and their children to participate in developmental screening, mobile/medical pediatric health services (including well child visits and immunizations), and hearing/vision screenings.

### **Target Population Served**

Children birth through eighteen years of age and their families

### **Service Area/Geographic Focus:**

Hillsborough County

**Bilingual Services:** Yes- Spanish

**Funding Amount:** \$1,041,795

### **Contact Information:**

**Address:** 4600 North Habana Avenue, Suite #26

Tampa, FL 33614

**Phone:** (813) 615-0919 or (813) 615-0589

**Website:** <https://baycare.org/sjch>

**Social Media:** Facebook: [Stjosephschildrens](https://www.facebook.com/Stjosephschildrens)

Twitter: [@Baycare](https://twitter.com/Baycare)

**Subcontracts:** None

## *Supporting Motherhood and More*

### **Program Description**

Supporting Motherhood and More is a 1 to 1, live telehealth counseling program offered for women (pregnant and postpartum up to two years) who may be experiencing perinatal depression or other mood disorders associated with pregnancy and/or birth. Support groups are led by a clinical social worker.

### **Target Population Served**

Pregnant and postpartum women in Hillsborough County

### **Service Area/Geographic Focus:**

Hillsborough County

**Bilingual Services:** Telephonic interpreter available if needed

**Funding Amount:** \$183,087

### **Contact Information:**

**Address:** 3030 West Dr. Martin Luther King Jr. Boulevard,  
Suite #404

Tampa, FL 33607

**Phone:** (813) 872-3925

**Website:** [www.baycare.org/hospitals/st.josephs-womens-](http://www.baycare.org/hospitals/st.josephs-womens-)

**Social Media:** [hospital/patients-and-visitor](http://hospital/patients-and-visitor)

Facebook: [St Josephs Womens Hospital](https://www.facebook.com/StJosephsWomensHospital)

Twitter: [@Baycare](https://twitter.com/Baycare)

Instagram: [@Baycare](https://www.instagram.com/Baycare)

**Subcontracts:** None

## *Successful Families*

### **Program Description**

The Successful Families program provides bilingual, culturally competent, community-based services for children and families in East and South county communities. We coordinate access to needed services including counseling and parenting support services through the Nurturing Parenting Programs.

### **Target Population Served**

Children birth to 8th grade

### **Service Area/Geographic Focus:**

East (Plant City/Dover) and South (Wimauma/Ruskin) Hillsborough County

**Bilingual Services:** Yes - Spanish and English

**Funding Amount:** \$518,379

### **Contact Information:**

**Address:** 2902 North Armenia Avenue, Suite #200  
Tampa, FL 33607

**Phone:** (813) 862-8742  
(813) 490-5490

**Website:** [www.S4KF.org](http://www.S4KF.org)

**Social Media:** Facebook: [Success 4 Kids and Families](#)  
Twitter: [@S4KF](#)

**Subcontracts:** None

## *Sulphur Springs YMCA Out of School Time*

### **Program Description**

The Sulphur Springs YMCA Out of School Time is an after school and summer program to support children in reaching their academic milestones through participation in literacy programs, Science, Technology, Engineering and Math (STEM) activities, and enrichment clubs.

### **Target Population Served**

Children enrolled in Kindergarten through 5th grade

### **Service Area/Geographic Focus:**

Sulphur Springs K-8 Community School

**Bilingual Services:** Yes - Spanish

**Funding Amount:** \$314,882

### **Contact Information:**

**Address:** 8412 North 13th Street  
Tampa, FL 33604

**Phone:** (813) 224-9622

**Website:** [www.tampaymca.org](http://www.tampaymca.org)

**Social Media:** Facebook: [Tampa YMCA](#)  
Instagram: [@TampaYMCA](#)  
Twitter: [@TampaYMCA](#)

**Subcontracts:** None



## *Children's Board Free Family Day*

### **Program Description**

Children's Board Free Family Day provides free admission into the Tampa Museum of Art for children and their parents or caregivers. Free admission will be offered from 10am to 5pm on the following dates: October 15, 2022; December 3, 2022; February 4, 2023; April 29, 2023. Families will be able to participate in a day of art, creativity, and fun. Enjoy art making projects, music, performances, gallery activities, refreshments, and more, all inspired by the Museum's exhibitions.

### **Target Population Served**

Families with children ages six to fourteen years old

### **Service Area/Geographic Focus:**

Hillsborough County

**Bilingual Services:** Yes - Spanish

**Funding Amount:** \$52,706

### **Contact Information:**

**Address:** 120 West Gasparilla Plaza  
Tampa, FL 33602

**Phone:** (813) 274-8130

**Website:** [www.TampaMuseum.org](http://www.TampaMuseum.org)

**Social Media:** Facebook: [@TampaMuseumofArt](https://www.facebook.com/TampaMuseumofArt)  
Instagram: [@TampaMuseumofArt](https://www.instagram.com/TampaMuseumofArt)  
Twitter: [@TampaMuseumArt](https://twitter.com/TampaMuseumArt)

**Subcontracts:** None

# UNIVERSITY AREA COMMUNITY DEVELOPMENT CORPORATION

*Get Moving! Mind, Body, Soul*

## **Program Description**

The Get Moving program focuses on physical, emotional, mental, and nutritional health. The program's main focus is to improve the overall health of all community residents, targeted to the University Area, by offering healthy activities through organized sports, educational classes and workshops. Individuals (youth and adults) are assessed and receive their personal tracking form that helps monitor their selected activities and individualized goals.

## **Target Population Served**

Children ages seven to fourteen and their parents/caregivers

## **Service Area/Geographic Focus:**

North Tampa

**Bilingual Services:** Yes - Spanish

**Funding Amount:** \$291,928

## **Contact Information:**

**Address:** 14013 North 22nd Street  
Tampa, FL 33613

**Phone:** (813) 558-1149

**Website:** [www.uacdc.org](http://www.uacdc.org)

**Social Media:** Facebook: [@UnivAreaCDC](https://www.facebook.com/UnivAreaCDC)  
Twitter: [@UnivAreaCDC](https://twitter.com/UnivAreaCDC)  
Instagram: [@UnivAreaCDC](https://www.instagram.com/UnivAreaCDC)

**Subcontracts:** None



## UNIVERSITY OF SOUTH FLORIDA BOARD OF TRUSTEES, THE

*Helping our Toddlers, Developing our Children's Skills (HOTDOCS)  
& Developing Our Children's Skills K-5 (DOCS K-5)*

### **Program Description**

HOT DOCS & DOCS K-5 are parent training programs that teaches caregivers and professionals how to support the social and emotional functioning of their children and to create a safe home environment. HOT DOCS focuses on the needs of young children birth to five years of age, while DOCS K-5 focuses on children five to twelve years of age. Both six-week programs (two-hour weekly sessions) also teach parents/caregivers how to access corresponding community resources. Classes are held in locations throughout the county.

### **Target Population Served**

Families with children birth through elementary school age

### **Service Area/Geographic Focus:**

Hillsborough County

**Bilingual Services:** No

**Funding Amount:** \$340,226

### **Contact Information:**

**Address:** 13101 North Bruce B. Downs Boulevard  
Tampa, FL 33612

**Phone:** (813) 974-1048

**Website:** [hotdocs.health.usf.edu](http://hotdocs.health.usf.edu)

**Social Media:** Facebook: [DOCS Parents Program](#)  
Instagram: [@DOCSparentingprograms](#)

**Subcontracts:** None



**UNIVERSITY OF SOUTH FLORIDA  
BOARD OF TRUSTEES, THE**

***Hillsborough HIPPY Parent Involvement Project***

**Program Description**

The Hillsborough HIPPY Parent Involvement Project trains parents and caregivers to prepare their preschool age children for early success in school through an evidence-based school readiness curriculum. HIPPY provides weekly in home visits where parents and caregivers are coached in age appropriate activities, developmental screenings, monthly family education events, and care coordination as needed. The program works with the Center for Autistic and Related Disorders (CARD) to support families with children on the Autism Spectrum.

**Target Population Served**

Parents and caregivers of children three to five years of age

**Service Area/Geographic Focus:**

Hillsborough County

**Bilingual Services:** Yes - Spanish

**Funding Amount:** \$1,457,290

**Contact Information:**

**Address:** 13301 Bruce B. Downs Boulevard, MHC #2113A  
Tampa, FL 33612

**Phone:** (813) 974-4909

**Website:** [floridahippy.fmhi.usf.edu](http://floridahippy.fmhi.usf.edu)

**Social Media:** Facebook: [Hillsborough HIPPY](#)

**Subcontracts:** Success 4 Kids and Families



# UNIVERSITY OF SOUTH FLORIDA BOARD OF TRUSTEES, THE

## *Program-Wide Positive Behavior Support (PWPBS)*

### **Program Description**

Program-Wide Positive Behavior Support (PWPBS) partners with early childhood centers and family child care homes to support social-emotional development in children, birth to five years of age. Sites receive training, materials, and educational coaching on how to best support all their children with social-emotional skills, while also reducing challenging behavior. Monthly training is also available and open to early childhood educators.

### **Target Population Served**

Early education providers (center-based and family child care homes), administrators, children birth to five years of age and their caregivers/parents

### **Service Area/Geographic Focus:**

Hillsborough County Child Care Centers or Family Child Care Homes

**Bilingual Services:** Yes - Spanish and Sign Language

**Funding Amount:** \$774,973

### **Contact Information:**

**Address:** 13301 Bruce B. Downs Boulevard, MHC #2113A  
Tampa, FL 33612

**Phone:** (813) 974-1455

**Website:** [pwpbs.cbcs.usf.edu](http://pwpbs.cbcs.usf.edu)

**Social Media:** Facebook: [PWPBS](#)

**Subcontracts:** None